



MODEL 200SS - 2 TON FLOOR JACK

PART ORDER NUMBER	KIT DESCRIPTION	KIT INCLUDES	
		REF. #	DESCRIPTION
200SSKRK	REPAIR KIT	H2	SAFETY VALVE
		H3	RELIEF VALVE SPRING
		H4	REGULATE BOLT-QTY. 2
		H5	SEAL WASHER - QTY. 2
		H6	SEAL BOLT - QTY. 2
		H7	STEEL BALL 5.5 - QTY. 2
		H8	SEPARTOR - QTY. 2
		H9	STEEL BALL 9 - QTY. 2
		H10	HIGH-PRESSURE SPRING -QTY. 2
		H11	HIGH - PRESSURE BOLT - QTY. 2
		H12	O-RING 9.5 X 2.65
		H13	OIL PLUG
		H13-5	BREATHER SCREW COVER
		H15	STEEL BALL 7
		H16	O-RING 7.1 X 2.65
		H18	SNAP RING 20
		H22	O-RING 20 X 2.65 - QTY. 2
		H23	BACK SEAL - QTY. 2
		H25	SEAL WASHER
		H27	OIL-STRAINER- QTY.2
		H28	O-RING QTY.2
		H30	O-RING
		H32	SNAP RING 16
		H33	O-RING 33.5 X 3.55 QTY. 2
		H34	BACK SEAL
		H36	O-RING 11.8 X 2.65 QTY. 2
		H40	SPRING PIN 4 X 24
		H41	OIL COVER
		H42	SEAL WASHER
		H44	O-RING 18 X 2.65 QTY. 2
		H45	BACK-SEAL QTY. 2
		H49	SNAP RING 18
H50	SAFETY VALVE		
H51	RELIEF VALVE SPRING		
H52	"Y" RING		
200SSK43	SADDLE PAD	43	RUBBER SADDLE PAD
200SSKHU	HYDDRAULIC UNIT COMPLETE	24	POWER UNIT COMPLETE
200SSK19	RETURN SPRING	19	RETURN SPRING
200SSK29	FRONT WHEEL	29	WHEEL
		46	WASHER
		47	RETAINING RING
200SSK12	CASTER	13	INNER HEX BOLT
		9	CASTER ASSEMBLY

*** ONLY PARTS WITH A "PART ORDER NUMBER" ARE AVAILABLE FOR SALE.**

DO NOT COPY OR DISTRIBUTE THIS MATERIAL WITHOUT PERMISSION OF AFF, INC.



MODEL 200SS - 2 TON FLOOR JACK

PART ORDER NUMBER	KIT DESCRIPTION	KIT INCLUDES	
		REF. #	DESCRIPTION
200SSK21	HANDLE SOCKET COMPLETE	11 12 14 17 18	HANDLE BASE SCREW INNER WASHER LINKAGE WASHER HANDLE BASE STEPPED-UP RING
200SSK41C	SADDLE COMPLETE	37 40 41 42 43 48	SADDLE BASE AXIS (SHORT) NYLON WASHER SADDLE BASE HOLDER AXIS RUBBER SADDLE PAD SPRING PIN QTY. 2
200SSK20	HANDLE	20	HANDLE
200SSK	HANDLE RETAINER		BOLT
200SSKH46	PRESSURE PUMP	H42 H43 H44 H45 H46 H47 H48 H49	SEAL WASHER PUMP CORE O-RING 18 X 2.65 QTY. 2 BACK SEAL QTY. 2 PUMP CASE PRESSURE SPRING PISTON COVER SNAP RING 18
200SSKH21	VOLUME PUMP	H18 H19 H20 H21 H22 H23 H24 H25 H22	SNAP RING 20 PISTON COVER PRESSURE SPRING PUMP CASE O-RING 20 X 2.65 QTY. 2 BACK SEAL QTY. 2 PUMP CORE SEAL WASHER PIN 4X35
200SSK17	RELEASE VALVE	H17	RELEASE ASSEMBLY
200SK29	OIL COVER	H29	OIL COVER QTY. 2
200SSK31	SIDE HANDLE ASM.	31 28	SIDE HANDLE SOCKET HEAD SCREW (2 REQUIRED)
NOT AVAILABLE	SEPARATELY	1	SCREW M10X22
NOT AVAILABLE	SEPARATELY	2	EYE BOLT M8X20
NOT AVAILABLE	SEPARATELY	3	LINK ROD AXIS
NOT AVAILABLE	SEPARATELY	4	SCREW M8X20
NOT AVAILABLE	SEPARATELY	5	INNER TIGHTEN WASHER 8



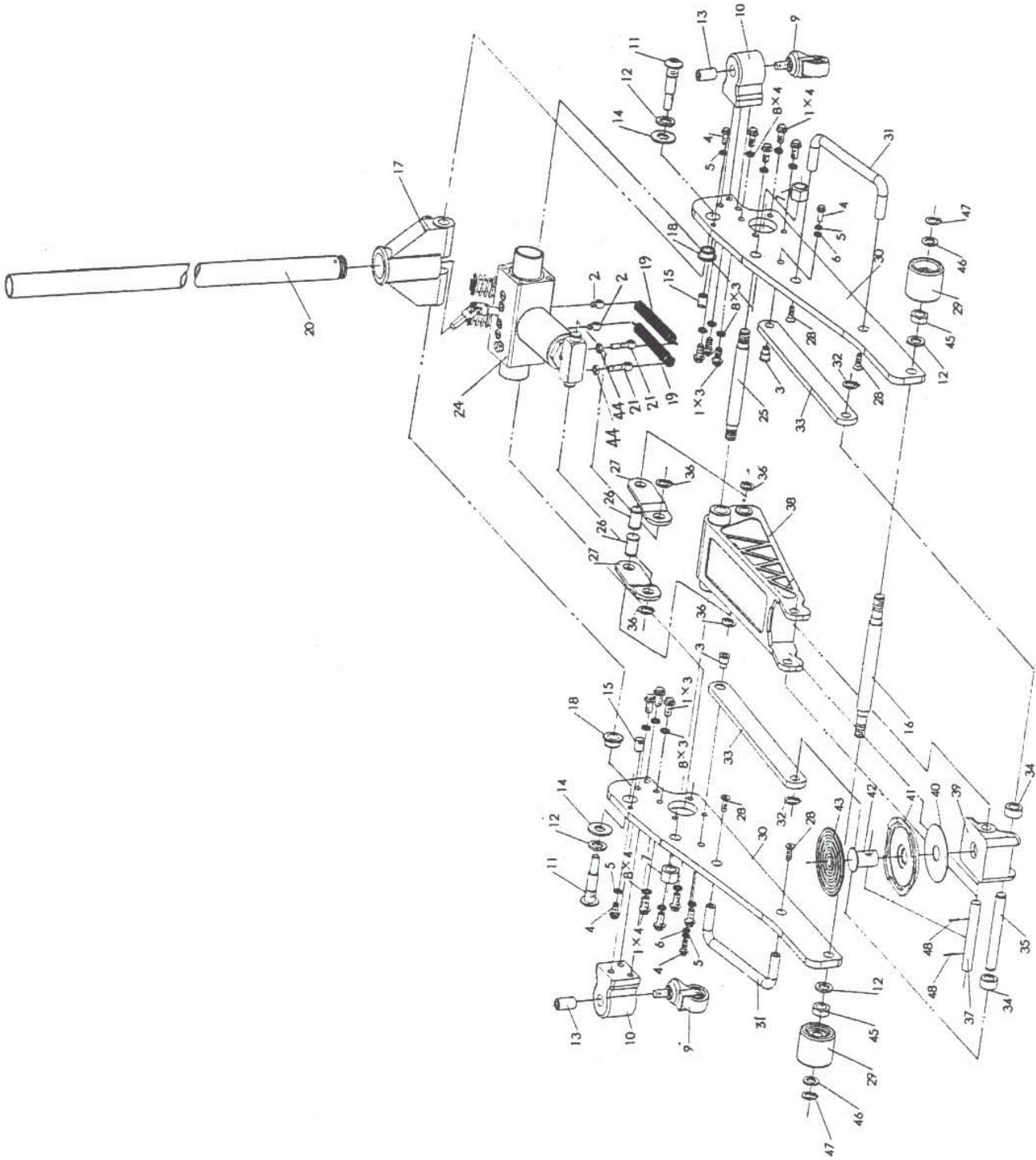
MODEL 200SS - 2 TON FLOOR JACK

NOT AVAILABLE	SEPARATELY	6	WASHER
NOT AVAILABLE	SEPARATELY	7	SCREW BUSH 20
NOT AVAILABLE	SEPARATELY	8	INNER TIGHTEN WASHER 10
NOT AVAILABLE	SEPARATELY	10	REAR WHEEL SADDLE
NOT AVAILABLE	SEPARATELY	15	CASE
NOT AVAILABLE	SEPARATELY	16	AXIS
NOT AVAILABLE	SEPARATELY	21	EYE BOLT M8 X 35
NOT AVAILABLE	SEPARATELY	22	EYE BOLT M6 X 12
NOT AVAILABLE	SEPARATELY	25	RAISE ARM AXIS
NOT AVAILABLE	SEPARATELY	26	PULL ROD AXIS
NOT AVAILABLE	SEPARATELY	27	PULL ROD
NOT AVAILABLE	SEPARATELY	32	"C" RING S16
NOT AVAILABLE	SEPARATELY	33	LINK ROD
NOT AVAILABLE	SEPARATELY	34	LINK ROD WASHER
NOT AVAILABLE	SEPARATELY	35	SADDLE BASE AXIS
NOT AVAILABLE	SEPARATELY	36	"C" RING S19
NOT AVAILABLE	SEPARATELY	38	LIFT ARM
NOT AVAILABLE	SEPARATELY	39	SADDLE BASE
NOT AVAILABLE	SEPARATELY	44	NUT M18
NOT AVAILABLE	SEPARATELY	45	THIN NUT M18
NOT AVAILABLE	SEPARATELY	46	WASHER 16
NOT AVAILABLE	SEPARATELY	H1	ALUMINUM BASE
NOT AVAILABLE	SEPARATELY	H26	BOLT

*** ONLY PARTS WITH A "PART ORDER NUMBER" ARE AVAILABLE FOR SALE.
DO NOT COPY OR DISTRIBUTE THIS MATERIAL WITHOUT PERMISSION OF AFF, INC.**



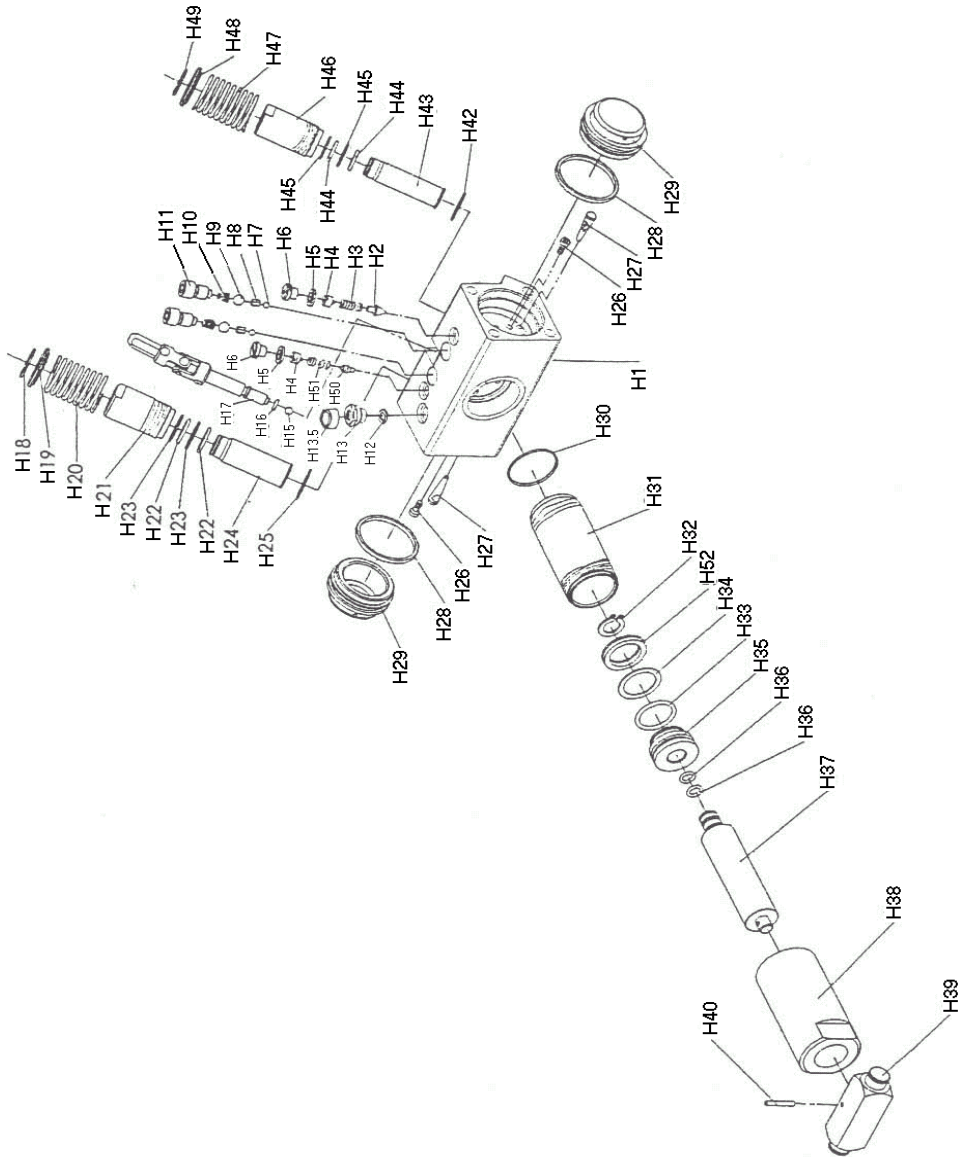
MODEL 200SS - 2 TON FLOOR JACK



*** ONLY PARTS WITH A "PART ORDER NUMBER" ARE AVAILABLE FOR SALE.
DO NOT COPY OR DISTRIBUTE THIS MATERIAL WITHOUT PERMISSION OF AFF, INC.**



MODEL 200SS - 2 TON FLOOR JACK



*** ONLY PARTS WITH A "PART ORDER NUMBER" ARE AVAILABLE FOR SALE.
DO NOT COPY OR DISTRIBUTE THIS MATERIAL WITHOUT PERMISSION OF AFF, INC.**