



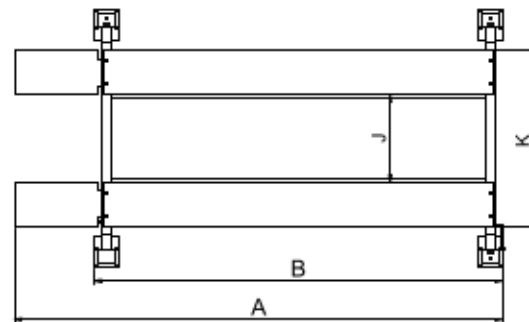
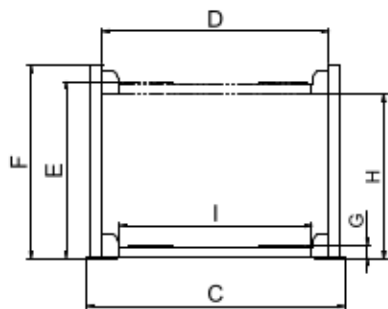
EXCLUSIVE FEATURE
Double-S shape column

MODEL 409-HP

A parking lift for full range vehicle including car, SUV and light truck. Similar to model 408-HP, but longer, wider and heavier.

FEATURES

- 9,000lbs lifting capacity
- High lifting rise: 82"
- AMGO exclusive hidden safety lock and manual single-point release device
- Multi safety locks in each column
- Adjustable lock ladder
- Automatic safety locks combined with redundant anti-fall devices
- Double-S shaped columns for increased the columns strength
- Non-slip platform
- Standard configuration with 4 wheel stops which is more safe
- Flexible Design: power side column can be installed at any corner
- Designed portable, it can be moved easily by using the optional caster kits 220V or 110V single phase power unit
- AMGO 5-3-2 Warranty



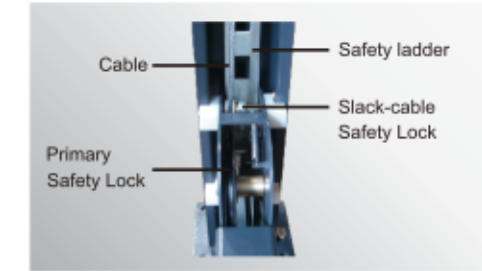
SPECIFICATIONS

Model	Lifting Capacity	Lifting Time	A	B	C	D	E	F	G	H	I	J	K	Gross Weight	Motor Power
			Overall Length (Inc.Ramps)	Overall Length (No Inc.Ramps)	Overall Width	Width Between Posts	Max.Lifting Height	Overall Height	Minimum Height	Max. Underneath Height	Drive-Thru Clearance	Width Between Runways	Outside Edge of Runways		
409-HP	9,000lbs	122S 46S	234 1/2"	200 3/4"	109 5/16"	99 5/8"	87 3/4"	96 5/8"	6 1/8"	83"	88 7/16"	42 3/8"	82 3/8"	1,993lbs	1.0HP,110V 2.0HP,220V

EXCLUSIVE FEATURES



Hidden locking device and manual single-point safety lock release.



Commercial double safety locks provide additional safety.

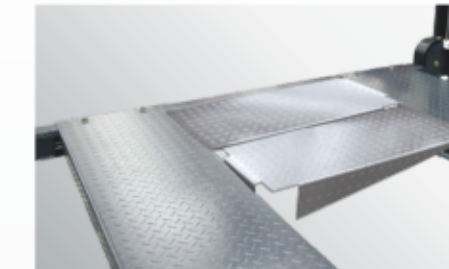
OPTIONAL PARTS



Optional Caster Kits help easily maneuver the parking lift. one set 4pcs.
Kit No: 40801



90° installation plate for installing the power unit at the side of a column.
Optional Kit No: 40802



Optional Aluminum alloy drive in ramps. Weight for the set is 40 lbs (18 kg).
Kit No: 40803



Optional Drip Trays one set 4pcs .
Kit No.: 40807.
Specifications 42" * 23 5/8"



Optional Jack Tray Kit No.:40809



Optional Rolling Jack: J6H: 6,000 lbs with manual pump

AMGO HYDRAULIC CORPORATION

SC Division: 1931 Joe Rogers Jr Blvd, Manning, SC 29102, USA
Tel:(803)505-6410

TX Division: 4310 Adler, Suite 200, Dallas, TX 75211, USA