

**XL-9F**

# FULL RISE SCISSORS FLUSH-MOUNT LIFT

*AMGO's flush-mount scissors lift is designed to fit nicely into narrow bays and won't take up much of your precious floor space.*



## Main Features

- ✓ Features an electric/hydraulic power system.
- ✓ Dual synchronous cylinders assure even lifting on both platforms.
- ✓ Platforms are designed to be extended. It can be adjusted for any car type.
- ✓ The automatic safety device is operated by air cylinders.
- ✓ Electro-air control cabinet.
- ✓ With hydraulic equalization, there's no need for a torsion bar.



Automatic safety release.



Extended platforms.



Strong tubing makes the lift safer and more durable than the competition.

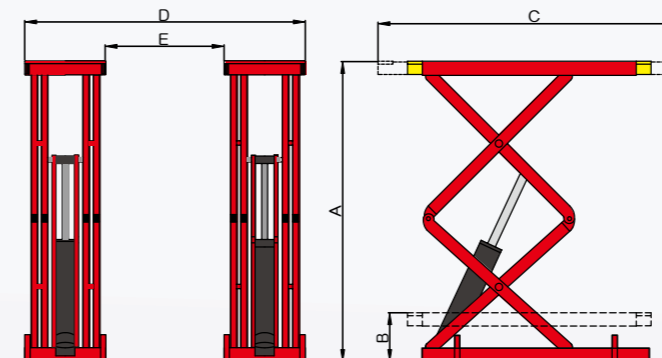


Leveling bar kits No.: SX003



Mechanical Safety Locks.

## SPECIFICATIONS



Model	XL-9F	
Lifting Capacity	9,000lbs	
Lifting Time	49 S	
Max. Lifting Height	A	87 3/4" (2230mm)
Minimum Height	B	13 3/4" (350mm)
Runway Length	C	65 1/8" - 80 7/8" (1654-2054mm)
Overall Width	D	74 3/4" (1900mm)
Width Between Runway	E	31 1/2" (800mm)
Gross Weight	2,028 lbs (920kg)	
Motor	2.0HP,220V/60Hz,single phase	